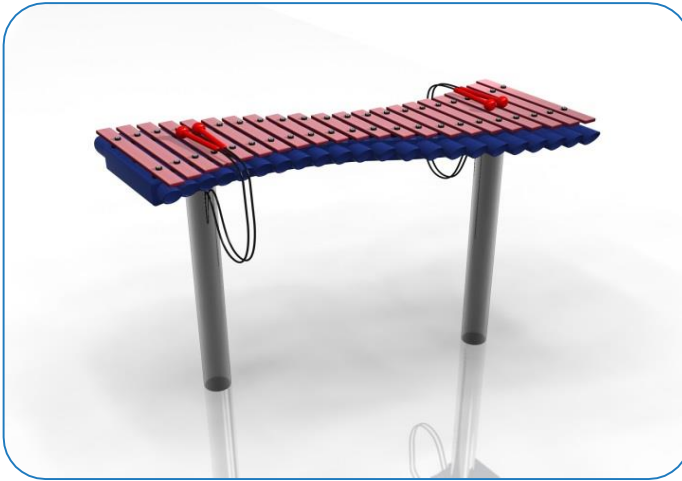


Installation Instructions

Ground Fixed

Duo
Page 1 of 3



1. Attach the steel legs to the base of the instrument with the M8 Nyloc Nuts and 2 part security caps. (1.1) (See Assembly Guide)

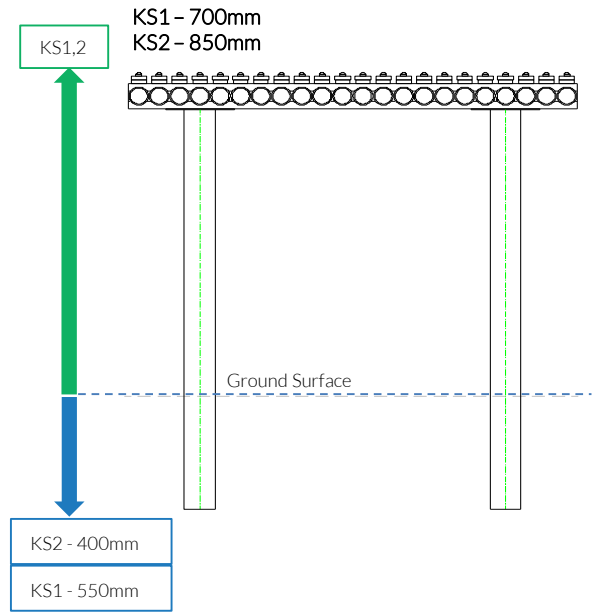
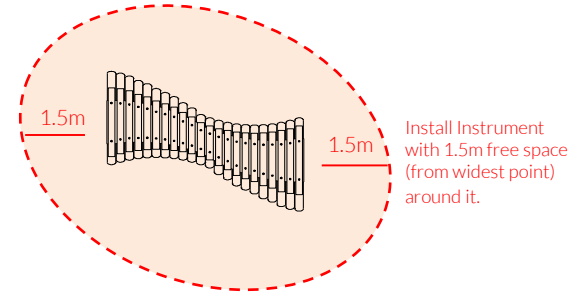
2. Attach Ground Fixing posts to legs (1.2) (See Ground Fix Post Installation Sheet)

3. Excavate 2 holes for the Steel legs 250mm diameter by 400-550mm deep depending on Key stage, in desired location upon decision from customer.

4. Locate (lower) legs into holes making sure they are vertical and level prior to concreting in place.

5. Once happy with location of the Instrument, fill holes using rapid hardening concrete. Be sure to compact concrete around legs and leave to dry according to manufactures guidelines.

6. Attach the 1 pair of beater to the saddle strap on the leg. (1.3)



Weight of heaviest part 14kg (Duo)

Instrument Components:

- x8
M8 Nyloc Nut
- x4
M6x20 Security Screw
- x8
2 Part Cover Cap
- x2
M6 Saddle Strap

Metric Conversion:

250mm	/ 10"
400mm	/ 15 3/4"
550mm	/ 21 21/32"
700mm	/ 27 9/16"
850mm	/ 33 15/32"
1.5m	/ 59"



Pair Small Red Beaters X2

Ground Fix Components:

- x4
M10x200 Bolt
- x8
M10 Nut

Spares available from www.musical-play.com or from your local distributor

28 Kg

Assembly Guide PPDUO



Tools:

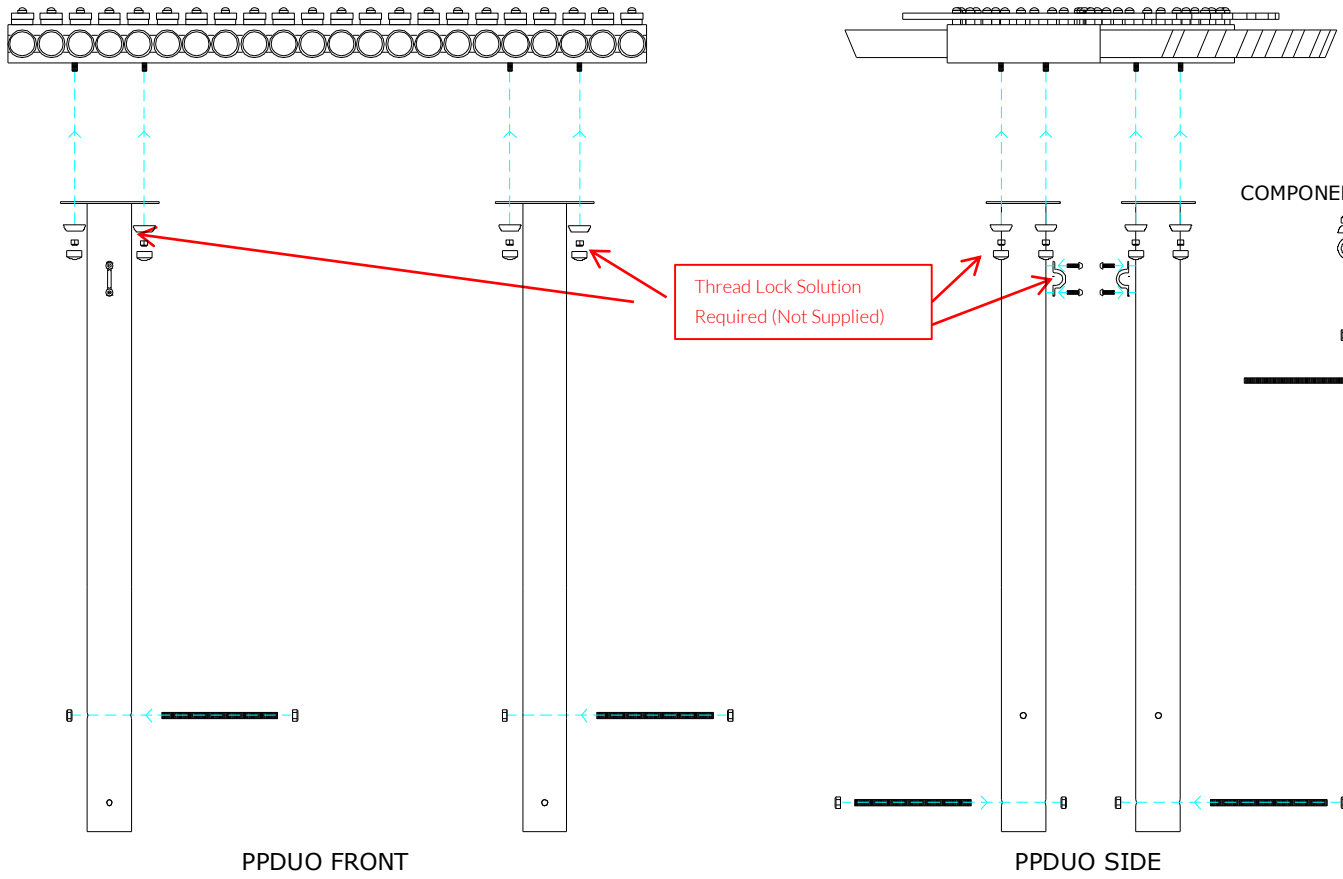
x1 TX 30 Driver Bit

x1 TX 40 Driver Bit

Ground Fixed Duo Page 2 of 3



- Instrument Components:
- x8 M8 Nyloc Nut
 - x4 M6x20 Security Screw
 - x8 2 Part Cover Cap
 - x2 M6 Saddle Strap



Thread Lock Solution Required (Not Supplied)

Pair Small Red Beaters X2

Ground Fix Components:

x4 M10x200 Bolt

x8 M10 Nut

Spares available from www.musical-play.com or from your local distributor

28 Kg

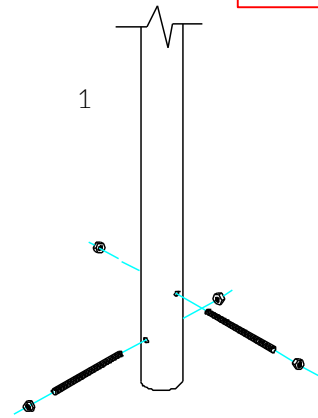
Ground Fix Post Installation

Foundations should not present a hazard. These foundations are recommended as a guide, for more information on foundation details for various surface see Part 7 of BS EN 1176.

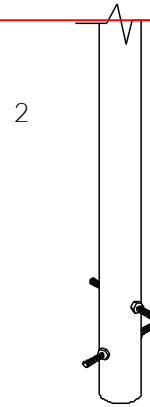


Ground Fixed

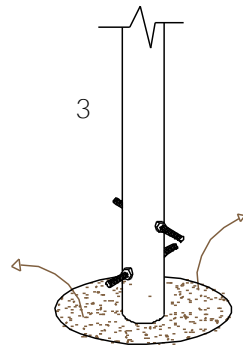
Duo
Page 3 of 3



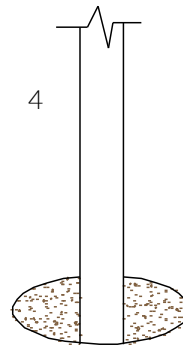
1
Insert M10x 150 Threaded bar into pre drilled holes in Ground Fixing Post



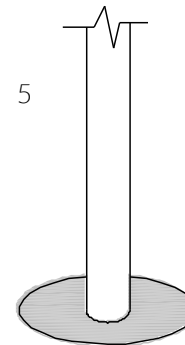
2
Fix M10x 200 Threaded bar in place using M10 Nuts



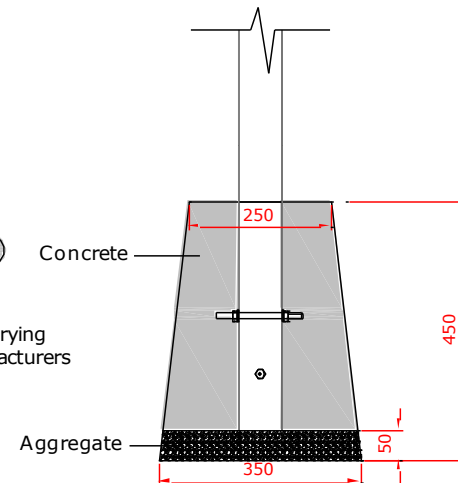
3
Excavate 6 holes with a 250mm diameter tapering down to 350mm diameter and 450mm depth



4
Compact base of hole with 50mm of aggregate. Lower ground Fix post attached to instrument into hole (check instrument straight and level before filling with concrete)



5
Fix hole with fast drying concrete to manufacturers specifications.



Duplicate points 1-5. Duo requires 2 Ground Fix Posts

400mm min depth

Components:



x4
M10x200 Bolt



x8
M10 Nut

Metric
Conversion:
50mm/ 2"
250mm/ 10"
350mm/ 14"
400mm/ 16"
450mm/ 18"